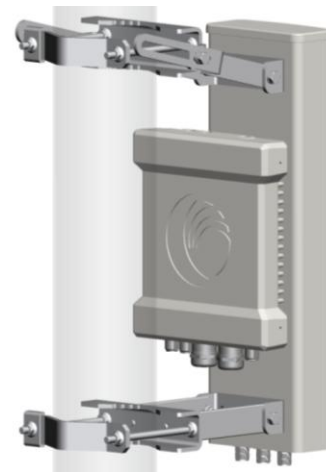




# PMP 58450 ACCESS POINT

The Canopy PMP 450 Access Point (AP) can provide more than 90 Mbps throughput and is interoperable with Canopy 430 series and 100 Series Subscriber Modules (SM). Service providers with an installed base of 100 series SMs can now add new high-throughput 450 series SMs to the network for business and residential access networks to enhance overall capacity, allowing more users and/or higher rate plans.

Cambium Networks provides exceptional wireless broadband connectivity solutions. With more than 3 million modules deployed in thousands of networks around the world, Cambium solutions are proven to provide cost effective, reliable data, voice and video connectivity.



FEATURE	SPECIFICATION
MODEL NUMBER	5x82AP, 5x92SM
FREQUENCY RANGE	5470-5725 MHz, 5725 – 5875 MHz
CHANNEL WIDTH	10 MHz (OFDM-only mode) or 20 MHz
CHANNEL SPACING	Configurable on 5 MHz increments
ANTENNA GAIN	17 dBi H+V, 7 dBi FSK patch (with included sector antenna)
TRANSMIT POWER	-30 to +19 dBm (to EIRP limit by region) (1 dBm interval)
MAX TRANSMIT POWER	19 dBm
EIRP	5.4GHz: 30 dBm FCC, ETSI (20MHz chnl) 27 dBm FCC, ETSI (10MHz chnl) 5.8GHz: 36 dBm FCC 36 dBm ETSI (20 MHz channel) 33 dBm ETSI (10 MHz channel)
ANTENNA BEAM WIDTH	60° sectors (H+V+FSK patch), 90° and 120° (H+V) sectors will also be available
ANTENNA CONNECTION	50 ohm, N-type
MODULATION LEVELS (ADAPTIVE)	1X= QPSK 2X= 16 QAM 3x= 64 QAM 1X= 2-Level FSK 2x= 4-Level FSK
FORWARD ERROR CORRECTION	¾ Reed-Solomon block coding
PHYSICAL LAYER	2x2 OFDM MIMO, FSK
MAC LAYER	Cambium Proprietary
CYCLIC PREFIX	¼, ⅓, ⅕ fixed
PACKETS PER SECOND	TBD
GPS SYNCHRONIZATION	Yes
SUBSCRIBERS PER SECTOR	Up to 200
ARQ	Yes
QUALITY OF SERVICE	DiffServ QoS
MAXIMUM DEPLOYMENT RANGE WITH REFLECTOR ON 100 SERIES SM, LOS	TBD

This product is not yet available or tested by the FCC. This advance information is subject to change prior to FCC certification and availability.



MAXIMUM DEPLOYMENT RANGE WITH REFLECTOR ON 430 SERIES SM, LOS	TBD								
MAXIMUM AGGREGATE THROUGHPUT PER SECTOR	<table border="1"> <thead> <tr> <th>10 MHz channel</th> <th>20 MHz channel</th> </tr> </thead> <tbody> <tr> <td>1X= 15.5 Mbps</td> <td>1X= 30 Mbps</td> </tr> <tr> <td>2X= 30 Mbps</td> <td>2X= 60 Mbps</td> </tr> <tr> <td>3X= 43 Mbps</td> <td>3X= &gt;90 Mbps</td> </tr> </tbody> </table>	10 MHz channel	20 MHz channel	1X= 15.5 Mbps	1X= 30 Mbps	2X= 30 Mbps	2X= 60 Mbps	3X= 43 Mbps	3X= >90 Mbps
10 MHz channel	20 MHz channel								
1X= 15.5 Mbps	1X= 30 Mbps								
2X= 30 Mbps	2X= 60 Mbps								
3X= 43 Mbps	3X= >90 Mbps								
LATENCY	5 – 7 ms round trip								
ENCRYPTION	DES, FIPS 197 Certified AES (Option)								
NOMINAL RECEIVE SENSITIVITY	<table border="1"> <thead> <tr> <th>10 MHz channel</th> <th>20 MHz channel</th> </tr> </thead> <tbody> <tr> <td>1X= -90 dBm</td> <td>1X= -87 dBm</td> </tr> <tr> <td>2X= -83 dBm</td> <td>2X= -80 dBm</td> </tr> <tr> <td>3X= -76 dBm</td> <td>3X= -73 dBm</td> </tr> </tbody> </table>	10 MHz channel	20 MHz channel	1X= -90 dBm	1X= -87 dBm	2X= -83 dBm	2X= -80 dBm	3X= -76 dBm	3X= -73 dBm
10 MHz channel	20 MHz channel								
1X= -90 dBm	1X= -87 dBm								
2X= -83 dBm	2X= -80 dBm								
3X= -76 dBm	3X= -73 dBm								
ETHERNET INTERFACE	10/100BaseT, half/full duplex, rate auto negotiated (802.3 compliant)								
PROTOCOLS USED	IPv4, UDP, TCP, IP, ICMP, Telnet, SNMP, HTTP, FTP								
NETWORK MANAGEMENT	HTTP, Telnet, FTP, SNMP v2c								
VLAN	802.1ad (DVLAN Q-in-Q), 802.1Q with 802.1p priority, dynamic port VID								
TEMPERATURE	-40° C to +55° C (-40° F to +131° F) 0% - 95% humidity, non-condensing								
WIND SURVIVAL	190 km/hour (118 mi/hour)								
WIND LOADING	90 lb								
DIMENSIONS (HxWxD)	Radio: 27x21x7 cm (10.6"x8.3"x2.8") Antenna: 51x13x7.3 cm (20.2"x 5.1" x 2.9")								
WEIGHT	5.9 kg (13 lbs) with antenna 2.5 kg (5.5 lbs) without antenna								
MAXIMUM POWER CONSUMPTION	19 W								
INPUT VOLTAGE	24 to 59 V								
CO-LOCATION WITH CANOPY 5.2 GHz	Yes								
CO-LOCATION WITH CANOPY 5.4 GHz	Yes, 10 MHz guard band separation or 5 MHz with 3 feet vertical separation required, synchronization required								
CO-LOCATION WITH CANOPY 5.8 GHz	Yes, 10 MHz guard band required or 5 MHz with 3 feet vertical separation required, synchronization required								
CE	TBD								
FCC ID	TBD								
INDUSTRY CANADA CERTIFICATE	TBD								

\*All specifications are preliminary and subject to change without notice.

This product is not yet available or tested by the FCC. This advance information is subject to change prior to FCC certification and availability.